

FOR LEASE



Westerville Office Space

425 W Schrock Rd., Westerville, OH 43081

Tim Weber | timweber@hcre.com | 614.374.5600

Westerville Office Space

425 W Schrock Rd., Westerville, OH 43081

PROPERTY INFORMATION

- Located in Westerville across from the Westerville Golf Center
- Reception Area
- 3 Hard-walled Office Spaces
- Conference Room
- Utility Room / Supply Room
- Bathrooms in common area
- Ample Parking Spaces
- Street Signage
- Furniture (available)

SPACE

- 1,338 SF (Suites 201 & 202 Combined by thru door | not shown on floor plan)

RATE

- Priced for Lease at \$16.00 MG (Tenant responsible for phone and internet)

Tim Weber | timweber@hannacre.com | 614.374.5600



Westerville Office Space

425 W Schrock Rd., Westerville, OH 43081

TOTAL POPULATION

261,014

TOTAL DAYTIME POPULATION

129,997

AVG. HH INCOME

\$103,044

| 2022 Population Summary | 1 Mile | 3 Miles | 5 Miles |
|-------------------------|----------|----------|-----------|
| Total Population | 7,467 | 118,116 | 261,014 |
| Households | 3,354 | 48,382 | 107,685 |
| Daytime Population | 4,689 | 70,393 | 129,997 |
| | | | |
| 2022 Household Income | 1 Mile | 3 Miles | 5 Miles |
| Average HH Income | \$78,076 | \$93,046 | \$103,044 |
| Median HH Income | \$65,314 | \$82,305 | \$89,049 |

Tim Weber | timweber@hannacre.com | 614.374.5600



The information submitted herein is not guaranteed. Although obtained from reliable resources, it is subject to errors, omissions, prior sale and withdrawal from the market without notice. Broker has made no investigation and makes no investigation and makes no representation of the property.

Westerville Office Space

425 W Schrock Rd., Westerville, OH 43081



Tim Weber | timweber@hannacre.com | 614.374.5600



The information submitted herein is not guaranteed. Although obtained from reliable resources, it is subject to errors, omissions, prior sale and withdrawal from the market without notice. Broker has made no investigation and makes no investigation and makes no representation of the property.

Westerville Office Space

425 W Schrock Rd., Westerville, OH 43081



Tim Weber | timweber@hannacre.com | 614.374.5600



The information submitted herein is not guaranteed. Although obtained from reliable resources, it is subject to errors, omissions, prior sale and withdrawal from the market without notice. Broker has made no investigation and makes no investigation and makes no representation of the property.

Westerville Office Space

425 W Schrock Rd., Westerville, OH 43081



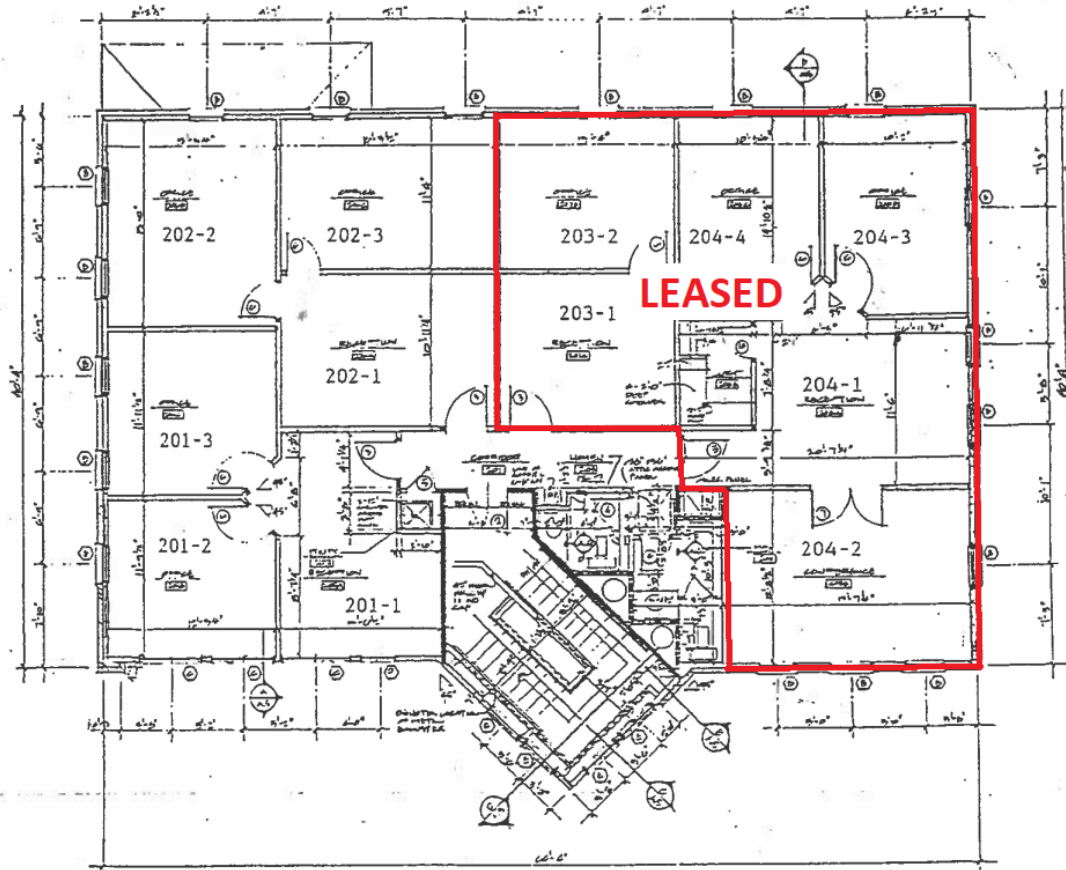
Tim Weber | timweber@hannacre.com | 614.374.5600



The information submitted herein is not guaranteed. Although obtained from reliable resources, it is subject to errors, omissions, prior sale and withdrawal from the market without notice. Broker has made no investigation and makes no investigation and makes no representation of the property.

Westerville Office Space

425 W Schrock Rd., Westerville, OH 43081



Tim Weber | timweber@hannacre.com | 614.374.5600



The information submitted herein is not guaranteed. Although obtained from reliable resources, it is subject to errors, omissions, prior sale and withdrawal from the market without notice. Broker has made no investigation and makes no investigation and makes no representation of the property.